



FIRE ALARM & DETECTION SYSTEM

ABOUT OUR COMPANY

Ravel Electronics Pvt. Ltd was established in 2003 and has grown to become a trusted name in the global fire and life safety industry and a market leader in Asia-Pacific's UL fire & PAVA mid-market space offering a comprehensive range of Intelligent addressable & conventional fire alarm systems, extinguishant control Panels and public address & voice alarm systems adhering strictly to stringent UL, FM and LPCB Standards. The factory is approved to stringent ISO 9001: 2015 Quality Management System standards.

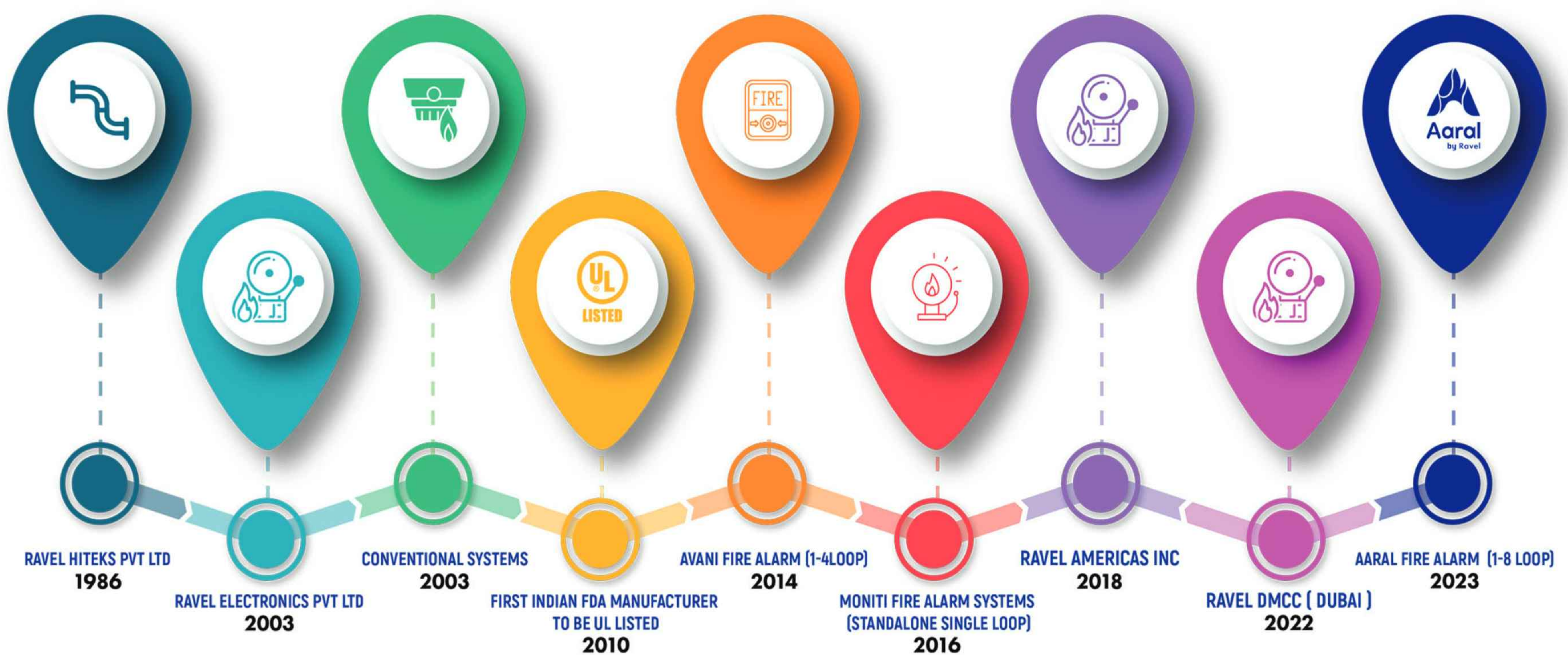
Ravel Electronics Pvt. Ltd is still the first and only Indian manufacturer and the second in Asia to obtain UL Certification for Fire alarm panels tailored to meet diverse needs and stringent safety standards

Ravel Electronics is headquartered in India with regional offices located in USA and UAE (Dubai) and employs over 400 people worldwide. Ravel has the world class 2 R&D centers employing highly skilled and experienced R&D engineers developing innovative futuristic solutions & products to cater to needs of the customers and market.

The company has a manufacturing capacity of over 60,000 panels and 5,00,000 detectors per annum covering microprocessor based intelligent addressable, conventional, gas release/extinguishing and PAVA systems- along with devices and accessories from a 50,000 square foot facility in Chennai, India

Ravel caters to more than 1 Million satisfied clients spread across 32 countries through 100+ distributors around the globe.

MILESTONE OF RAVEL



01**Avani – Analogue Addressable System****03****02****Avani – Modules and Accessories****04****03****Conventional System****07****04****Special Detectors****10****05****Agent Release System****11****06****Public Address & Voice Evacuation System****12**

The Ravel addressable fire alarm control panel comes in two series AVANI with UL listing and MONITI NX with CE approvals. These panels offer a cost-effective solution that is simple to install and commission catering to small to mid-sized buildings

AVANI

4 Loop Fire Alarm Control Panel

- Listed with UL 864 9th edition.
- Perfect for small to mid-sized buildings.
- Support 1-4 loops and networkable upto 8 panels.
- Each loop supports 254 devices in any combination of detectors/modules.
- Built-in RS-485 network card for peer to peer networking.
- Large 160-character LCD display with touch keypad.
- Supports 8128 devices on a single peer to peer network.
- USB 2.0 built-in for PC interface.
- Easy to commission, simple & powerful programming and easy to maintain.



MONITI NX

Single Loop Fire Alarm Control Panel

- Single loop fire alarm control panel.
- Maximum 127 devices exclusive of 32 loop sounders.
- 40 x 4 characters LCD display.
- USB 2.0 interface for PC connectivity.
- RS 485 connectivity for repeater.
- Upto 192 grouping facility.
- CE approved.

AVANI RP

Addressable Passive Repeater

- Touch Keypad.
- 160 (40X4) character LCD Display.
- User selectable display parameters.
- 2000 Event with Real Time Clock.
- RS 485 communication for Network.
- Common fire, supervisory, fault LED indication.
- UL listed (9th Edition)



RE-317 SERIES

Addressable Detectors

- UL listed.
- Polarity free, Dual LED's, and 360o visibility.
- Advanced detection and communication protocol.
- Detector's sensitivity can be programmed through FACP
- Sleek low-profile housing design.
- Regular 100mm base.
- Address set by 8-digit DIP switch.
- UL listed.

RE-717PD

Addressable Manual Pull Station

- Dual action pull station.
- Low profile smooth edged non-toxic die-cost metal.
- 10 amps contact rated.
- Break glass rod and hex screw for key lock access.
- Addressed through DIP switch.
- Inbuilt Isolator.



RE-717 M

Addressable Manual Call Point

- Single and dual action.
- Resettable by on element kit.
- Module addressing by 8-way DIP switches.
- Suitable for flush or surface mounting.
- Inbuilt Isolator.

RE-717 SERIES

Addressable Modules

- Complies UL 864 9th edition.
- Modules available in 6 different types.
- All field wirings are supervised.
- Form-C potential free contact for relay & IO modules.
- Monitored 24V DC input in control & zone modules.



⊙ RE-717MM - monitor module.

⊙ RE-717MC - control module.

⊙ RE-717MX - input/ output module.

⊙ RE-717MR - relay module.

⊙ RE-717MZ - zone interface module.

⊙ RE-717MI - fault isolator module.



RE-716SS | SO

Sounder | Sounder Strobe

- Two audible tone setting: continuous and temporal 3.
- 4 candela setting: 15/30/75/110 cd output.
- 180 ° coverage indication.



RE-24LS | RE-354BS

Loop Powered Sounder

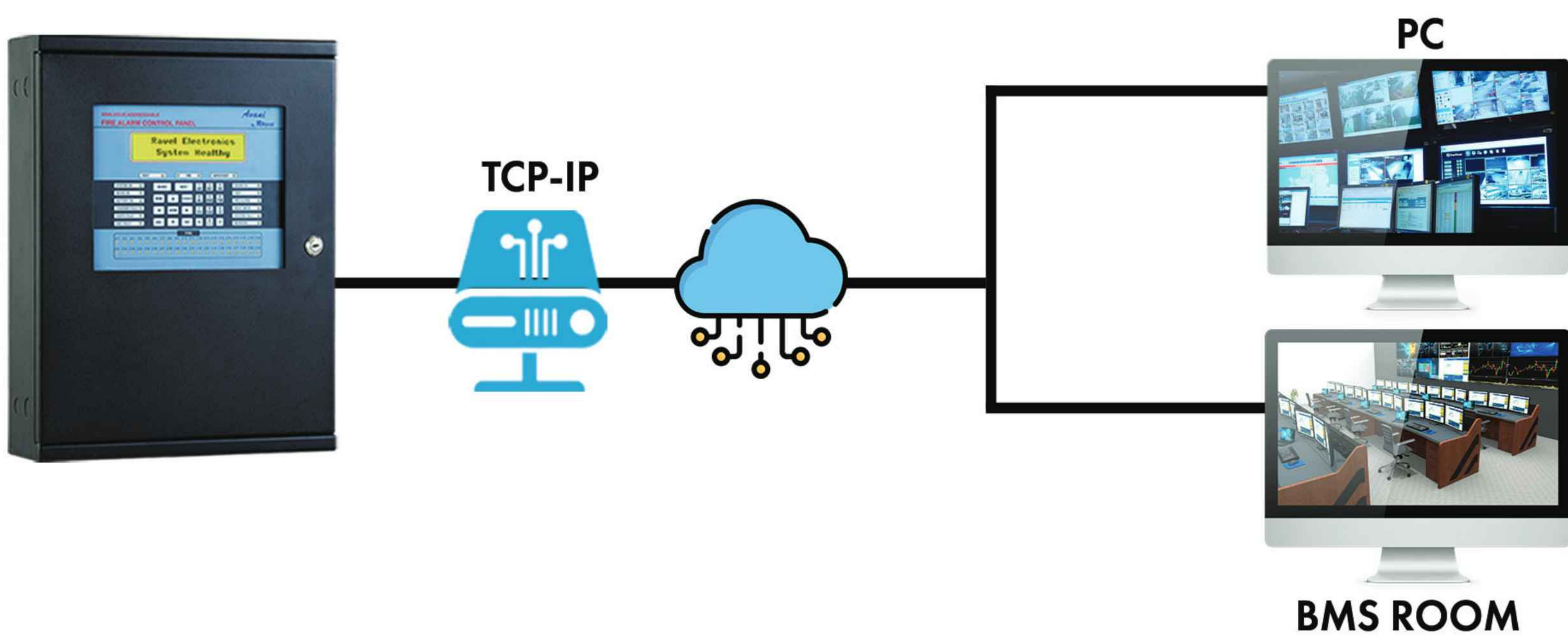
- Slim and sleek.
- 8 different tone selection by using 4 way DIP switch.
- Wall or ceiling mount.
- Inbuilt isolator
- Sounder base model available compatible to fix 4 inch detector.
- Compatible with Monitl NX



AVANI CMS

Centralized Control Monitoring Software

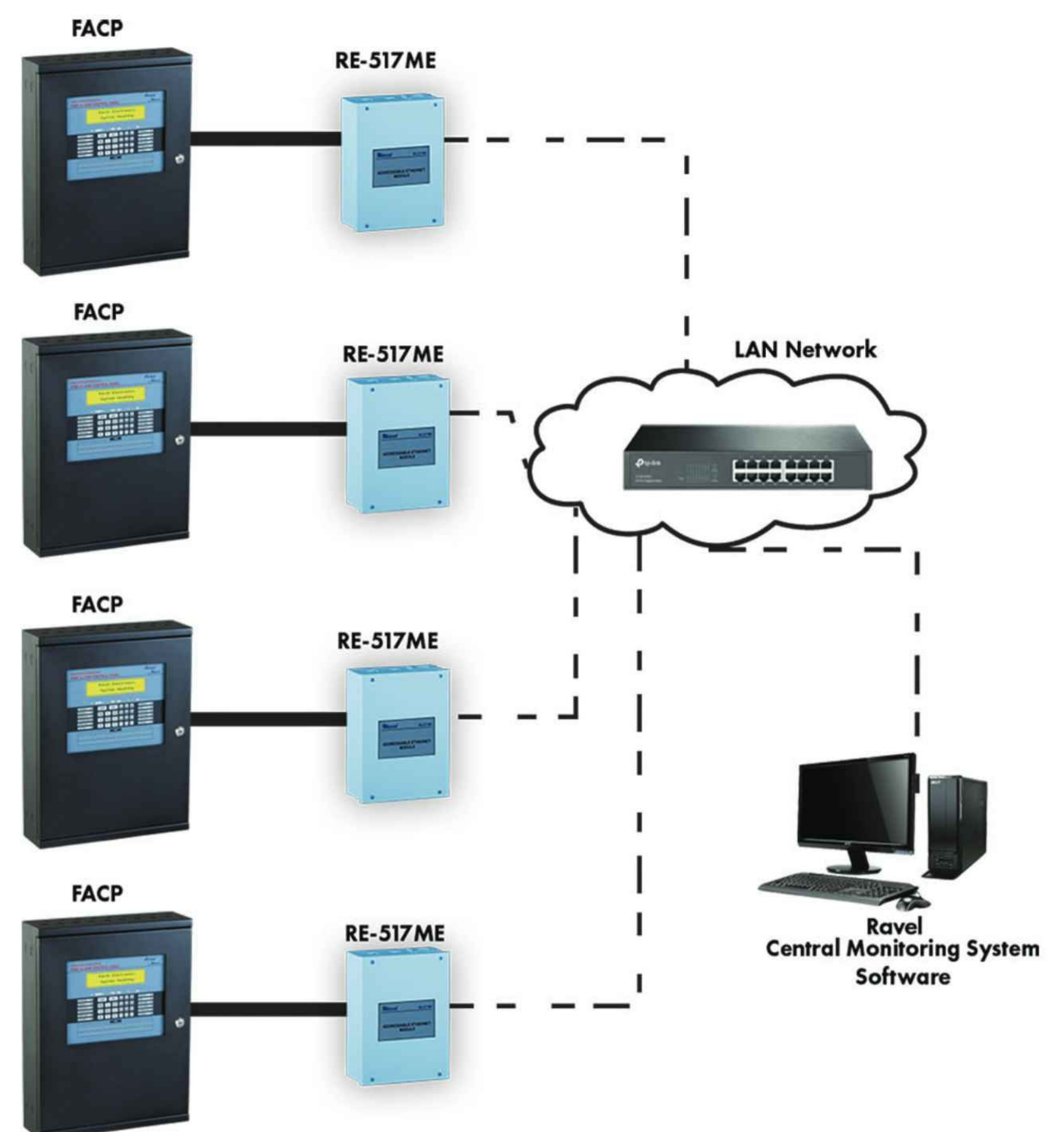
- The Panel Status or Remote notification.
- Reset the panel through Avani CMS software.
- Communication can be done through ethernet /USB.
- The events log can be exported/ print from the CMS software.
- Licensing option for user safety.



AVANI SOFT

Graphic Software

- Windows based software with Three level user access.
- Facility to monitor and control the fire alarm panels from a single window screen.
- Floor configuration using DWG / DXF files.
- Max. 16 AVANI panels can monitor and control through the software.



RE-517 ME

TCP-IP Module

- Ready-To-Use TCP/IP firmware for fast integration.
- TCP Server & UDP driver operation modes.
- Available as RS-485 interface from panel to converter.
- Gives full details of detectors, I/O of addressable of FACP.



RE-517 TM

MODBUS Module

- Two types of interrogation with master and slave devices.
- MODBUS output available on TCP /IP.
- Available as RS-485 interface from panel to converter.



RE-717RT

Protocol Converter

- Give full details of inputs and outputs of FACP.
- The protocol converter has 3 Inputs USB, RS485, Contact Inputs.
- 2 Output mode RS485 Modbus and TCP/IP - Modbus / PC Software.
- 10/100M auto sensing Ethernet mini card for embedded device networking.
- Low power consumption.

RE-PS5

NAC Extender / Power Supply

- Updated for UL 864 10th Edition.
- User friendly plug & play without any tool.
- Remote Alarm input facility
- 2 circuits of 24VDC output with short circuit protection.
- 2 supervised NAC output with short circuit protection.
- Configurable NAC Extender.
- Inbuilt RS-485.
- Ground fault detection facility.



RE-102 R | 104 R

2/4 IDC's Control Panel

- 2/4 zone conventional panel
- 16 * 2 dot matrix LCD display
- Tactile keypad for easy operation
- SMPS power supply
- 100 alarm events log with RTC
- TCP-IP/GSM facility (optional)
- FRABS plastic housing
- IP 60 rated



RE-2554 | 2558

4/8 IDC's Control Panel

- Operates on 110 - 220VAC 50 /60 Hz, AC mains power supply.
- 4/8 Class B Style 'B' or Style 'C' initiating device circuit (IDC).
- 2 Class B notification appliance circuits (NAC).
- Supervisory zone shall be latching or resettable.
- Form C relays for fire, fault and supervisory.

RE -900 SERIES

12- 128 IDC's Control Panel

- User friendly touch key pad.
- Switch mode power supply.
- RS485 communication for repeater & peer to peer network.
- Models available in 12 to 128 Zones.
- TCP /IP CMS software & MODBUS (optional).
- External zone wise sounder/relay contact via RS 485 (optional).
- Maximum 16 panels can be connected to a single network.





RE-316 SERIES

Conventional Detectors

- Sleek low-profile housing design.
- Dual LED's for 360° visibility.
- Advanced detection technique.
- Polarity free wiring.
- Regular 4 inch and 6 inch base are available.

RE-326 SERIES

Conventional Detectors

- Dual LED's for 360° visibility.
- Advanced detection and communication protocol.
- Easy installation and maintenance.
- Sleek low -profile housing design.
- Regular 100mm base.
- EN-54 standard.



RE-25SS | RE-24CS

Sounder | Sounder Strobe

- 100 dB@ 1 m distance.
- 3 type field configurable tone setting.
- Ceiling and flush mount.

RE-716 MR | MY | MG

Manual Call Point

- Single and dual action.
- Resettable by on element kit.
- Suitable for flush or surface mounting.



RE-2APS | 5APS | 512PS

Power Supply

- Operates on 120-220VAC 60/50 Hz.
- Battery backup with built-in charging.
- Low battery visual & audio indication. DC output indication.
- Replaceable fuse DC output.
- Regulated DC output.

RE-GVD

GSM Voice Dailer

- 2G/3G/4G micro SIM card for voice call and SMS alert.
- 2 trigger inputs.
- Preconfigured voice call & SMS alert.
- Up to 10 mobile no's configured.
- 1 relay output.



Available on Single & Double side

RE-LZR-XSMO SERIES

Emergency Exit Light

- Low power consumption.
- Battery backup above 1.5Hours
- Battery life up to 5 years or 500+ lifecycle.
- LED driver extends the lamp life up to 60,000 hours.
- Dual colour LED used to identify the AC supply/ battery operating status.

RE- 428DU

Duct Detector

- One pipe air sampling system.
- High efficient single sample tube.
- Patented venturi pipe and duct housing.
- Test hole on cover.
- Available on addressable & conventional smoke detectors.



RE- 386 SERIES

CO | NG | LPG Detector

- 4 wire operation.
- Inbuilt buzzer.
- Stable gas sensing chamber.
- Detector auto reset once gas level fall below alarm threshold levels.

RE- 428FR | HR

Optical Beam Detector

- In built laser light for easy alignment.
- Supports 50 & 100 meter range.
- Sensitivity threshold: 18%,30% & 50%.
- Infrared transmitter and receiver located in a single housing.



EAZY BEAM

Motorized Beam Detector

- Low current consumption.
- It eliminates false alarm caused by crosstalk between beam losers.
- Cleaning the optics does not affect alignment.
- Area coverage 0-50 meters and 0- 120 meters.



RE-120GR

Agent Release Panel

- 2 Zone with 1 RAC output.
- Programmable solenoid ON/OFF timer.
- Relay output for actuators.
- Two mode operation facility (auto/ manual).
- Keypad lock facility.

RE-25AR

Agent Release Panel

- 4 Zone with 2 RAC output.
- Auto resettable fuse.
- Two modes of operation auto/ manual.
- Special logic circuitry to prevent accident release .
- Separate LED indications on front Facia for individual Releasing agent circuit.



CYLINDER



RE-716P1T LP (Y)



RE-716P1T LP (G)

RE-716 P1T SERIES

Manual Pull Station

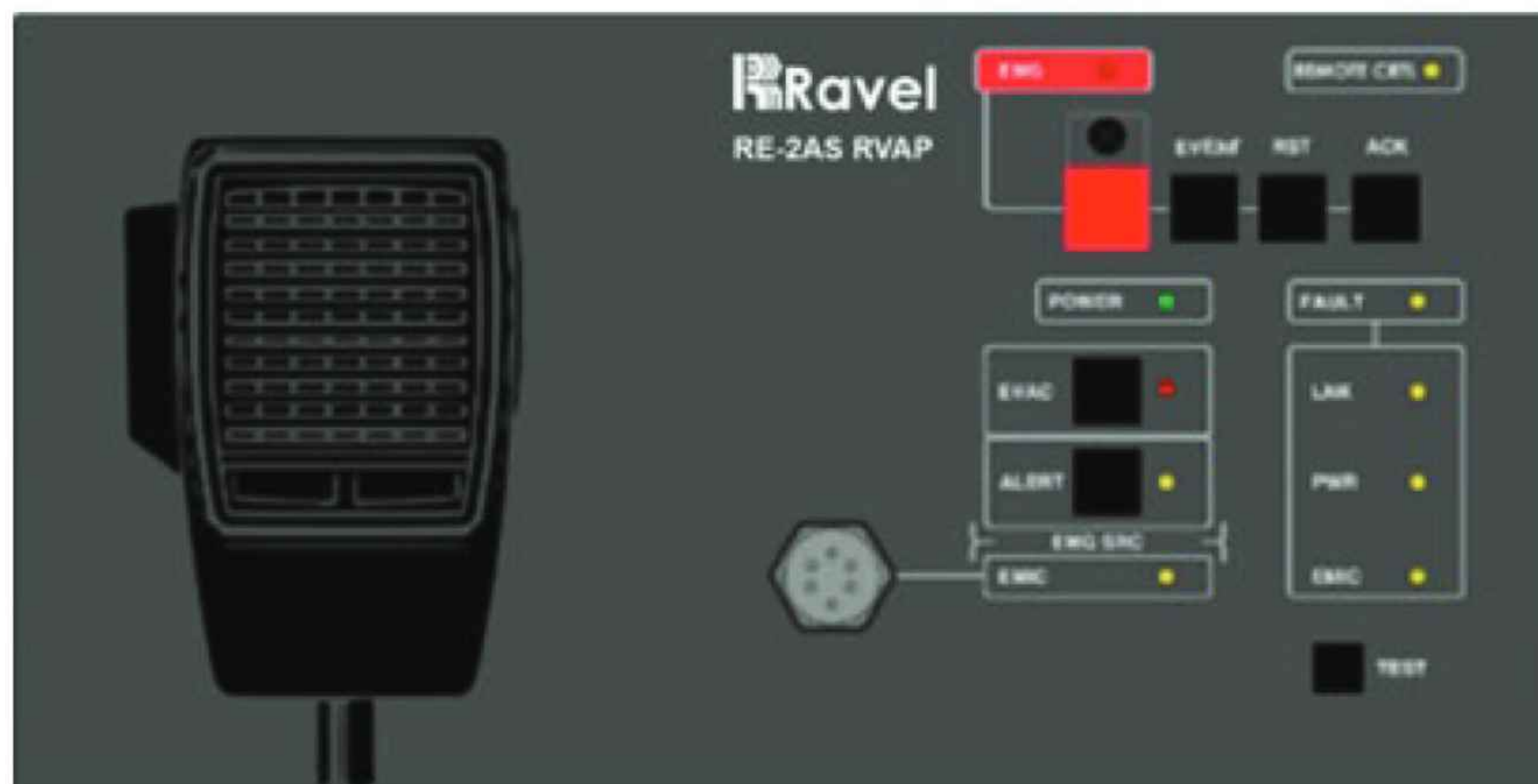
- Single / dual action lift and pull.
- Release/ abort written on top for easy visibility with colours code.
- 10A, 120VAC, snap action switch.
- Break glass rod and hex screw for key lock access.



RE-2AS

Public Address Voice Evacuation

- Certified under EN 54-16, EN 54-4 and EN 60849 standards.
- 3 audio inputs.
- 2 class D amplifiers with two configurations for 100V/70V lines up to 500W.
- Backup amplifier included.
- Digital audio matrix 6x6, expandable.
- 4 pre-amp outputs for external PA amplifiers connection.
- 8+2 GPIO ports, supervised for integration with fire alarm control panel.
- DSP: 3/7-band input/output parametric equalizer, loudness, ravel sound enhancer, independent volume control per each input and output master.
- Rack / Wall mountable system.



RE-2AS RVAP

Voice Alarm Panel

- Up to 56 group memories of up to 8 zones per memory (448 zones of the system).
- Prior notice tone.
- Volume adjustment.
- Indicators for emergency, fault, link & power supply.
- Indicator for broadcasting of voice evacuation.
- Emergency controls, reset, acknowledge, test, alarm message, evacuation message.
- Side port to connect up to 7 expansion keyboards.

RE-2AS XL | RE-2AS 4L

Loop Expansion Module

- Extend RE-2AS systems up to 60 zones
- Loop redundant communication
- System control and monitoring
- Easy to install





CE

e'Scape

Zone Wise Amplifier with Microphone

- Inbuilt 250 watts amplifier.
- One inbuilt microphone for announcement.
- Zone wise (speaker line) selection facility with LED indication.
- Voice / alarm / allcall selection facility
- Programmable mode (alarm, mic, music, DVA) selection facility.
- Alarm activated on automatically announcing mode.
- Compatible with Avani via RS 485 communication.

Revac Nx

Public Address Console

- Operates on 220VAC 50 Hz, main switch mode power supply.
- It can be integrated with any third party FACP.
- One push to talk microphone provided for announcement.
- All loud speaker lines are supervised.
- Volume level indicator.
- Programmable mode (alarm, mic, music, DVA) selection facility.
- Compatible with RE-900 series via RS 485 communication.



CE



CE

RE-EX Series

PA Expander

- 24VDC input voltage
- RS-485 communication with Indication.
- Membrane keypad for user friendly operation.
- Zone wise (speaker line) selection facility with LED indication.
- 100V audio output for speaker.
- Alarm activated on automatically announcing mode.
- Zones expansion in multiple of 16.
- Compatible Expander for e'Scape.

RE-XP Series

PA Expander

- 24VDC Input voltage
- Power ON, charger ON indications.
- RS-485 communication with Indication.
- Membrane keypad for user friendly operation.
- Zone wise (speaker line) selection facility with LED indication.
- 100V audio output for speaker.
- Alarm activated on automatically announcing mode.
- Zones expansion in multiple of 16.
- Compatible Expander for Revac NX.



CE



RE-2ASMP8Z

Multi-Zone Paging Microphone

- Flush mount Ø 15 cm dynamic cone speaker.
- Three field selectable power taps.
- ABS plastic grill with metal punched net.
- Easy to install with spring catch mount.
- Connectors with screw for hooking up the wires tightly.
- Protective dust cover at rear.
- The white colour of the grill has been selected to be obtrusive in virtually all interiors.

RE-2AS PPT

Push To Talk Hand Microphone

- Suitable for RE-2AS series.
- Easy to install and use.
- Powered from RE-2AS usb port.



RE-2AS EOL

End Of Line Device

- Supervision of 70V or 100V speaker lines.
- Small & easy for installation.
- Several devices can be connected to the same speaker line.
- Higher accuracy on impedance measurements.
- Supervision until the last speaker, even in low load speaker lines.
- Compatible with RE-2AS systems with the latest firmware version.

RE-LS6C

PA Ceiling Mount Speaker

- Flush mount Ø 15 cm dynamic cone speaker.
- Three field selectable power taps.
- ABS plastic grill with metal punched net.
- Easy to install with spring catch mount.
- Connectors with screw for hooking up the wires tightly.
- Protective dust cover at rear.
- The white colour of the grill has been selected to be obtrusive in virtually all interiors.



RE-LS6W | RE-LS3W | LS20W

PA Wall Mount Speaker

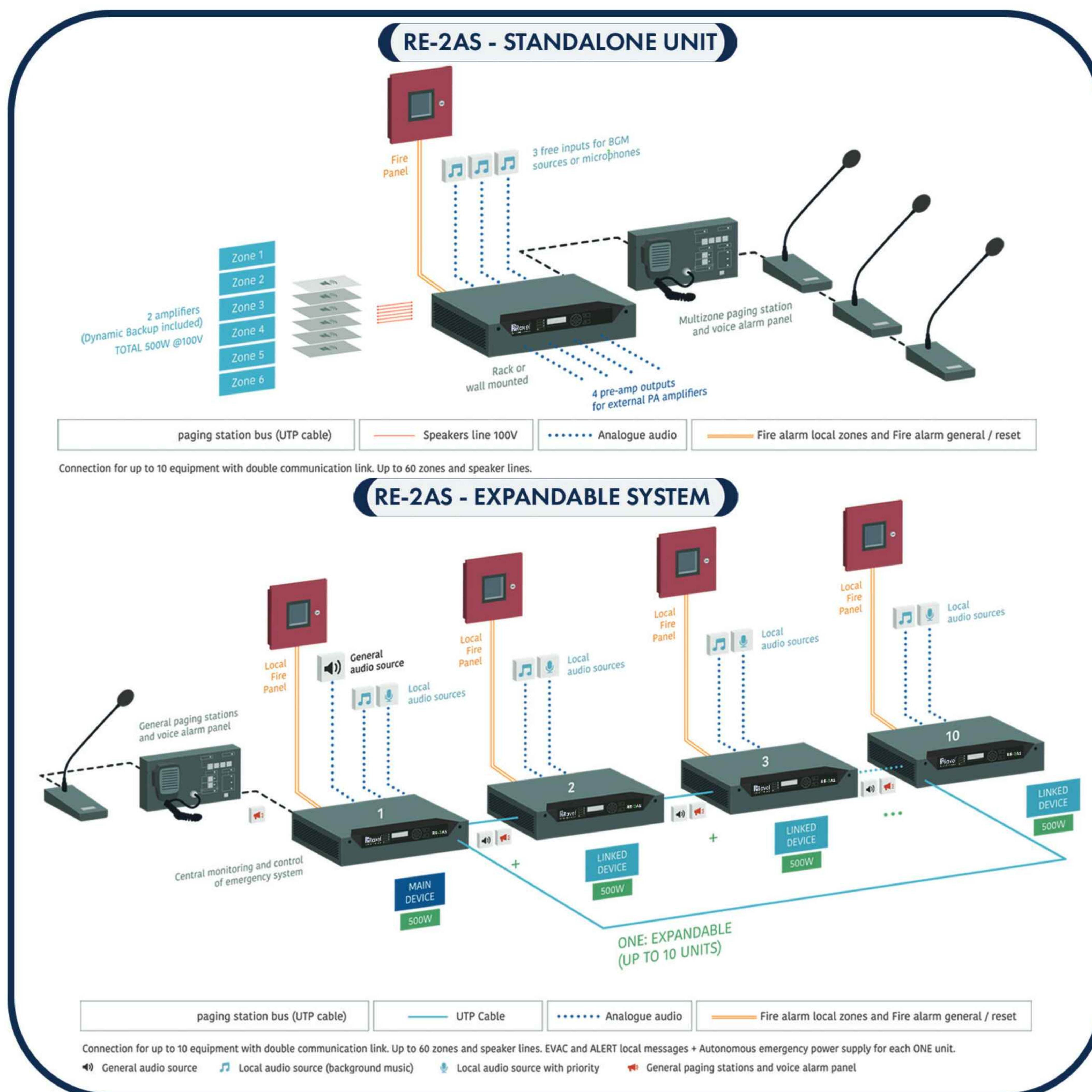
- Attractive, stylish ABS white plastic BOX.
- The specially designed slim speaker is obtrusive in all interiors.
- Equipped with the transformer to provide 100 V line.
- Ideal for office work stations, classrooms, shops, malls, etc.
- Available in 3W / 6 W / 20W speakers



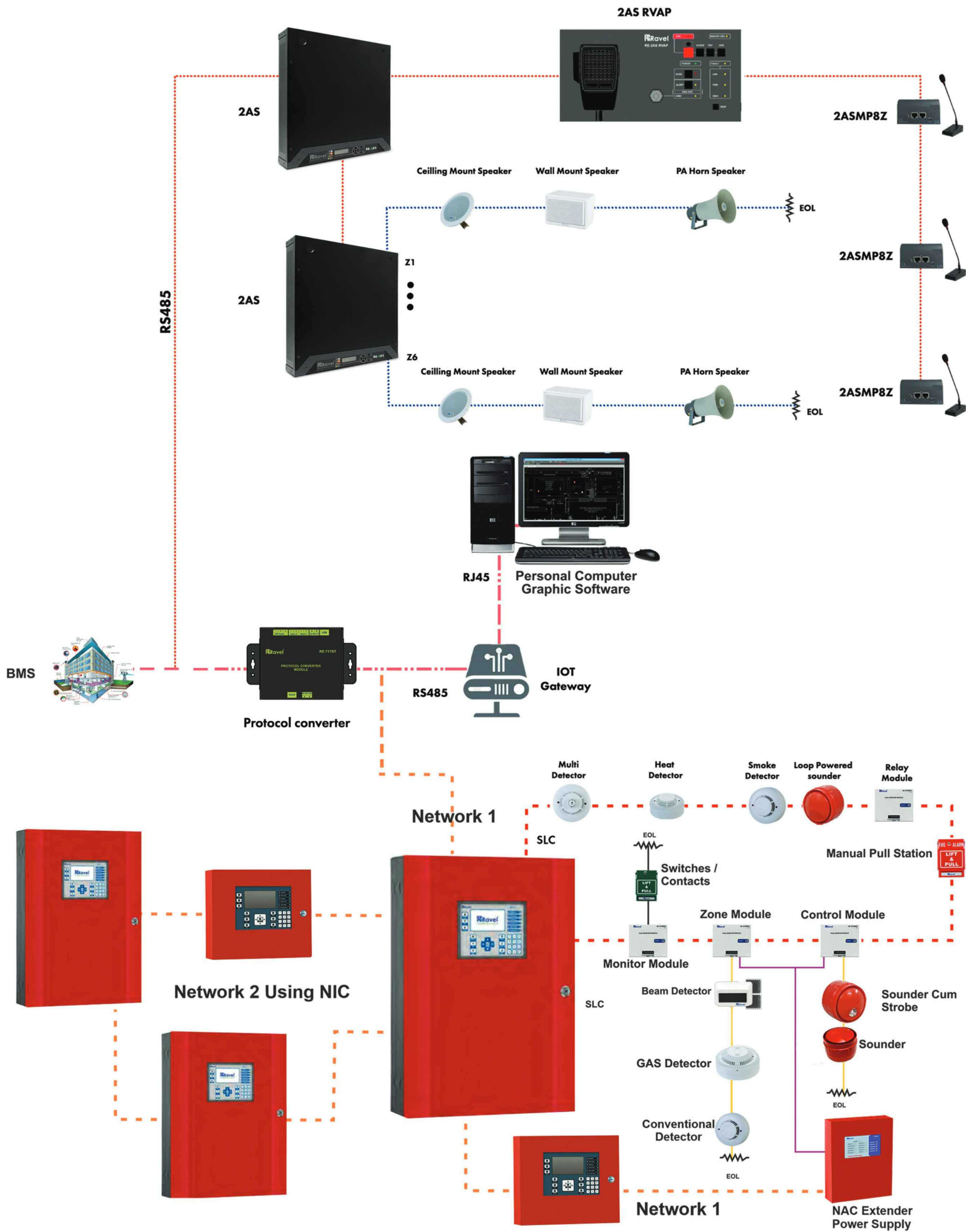
RE-LU100XT

PA Horn Speaker

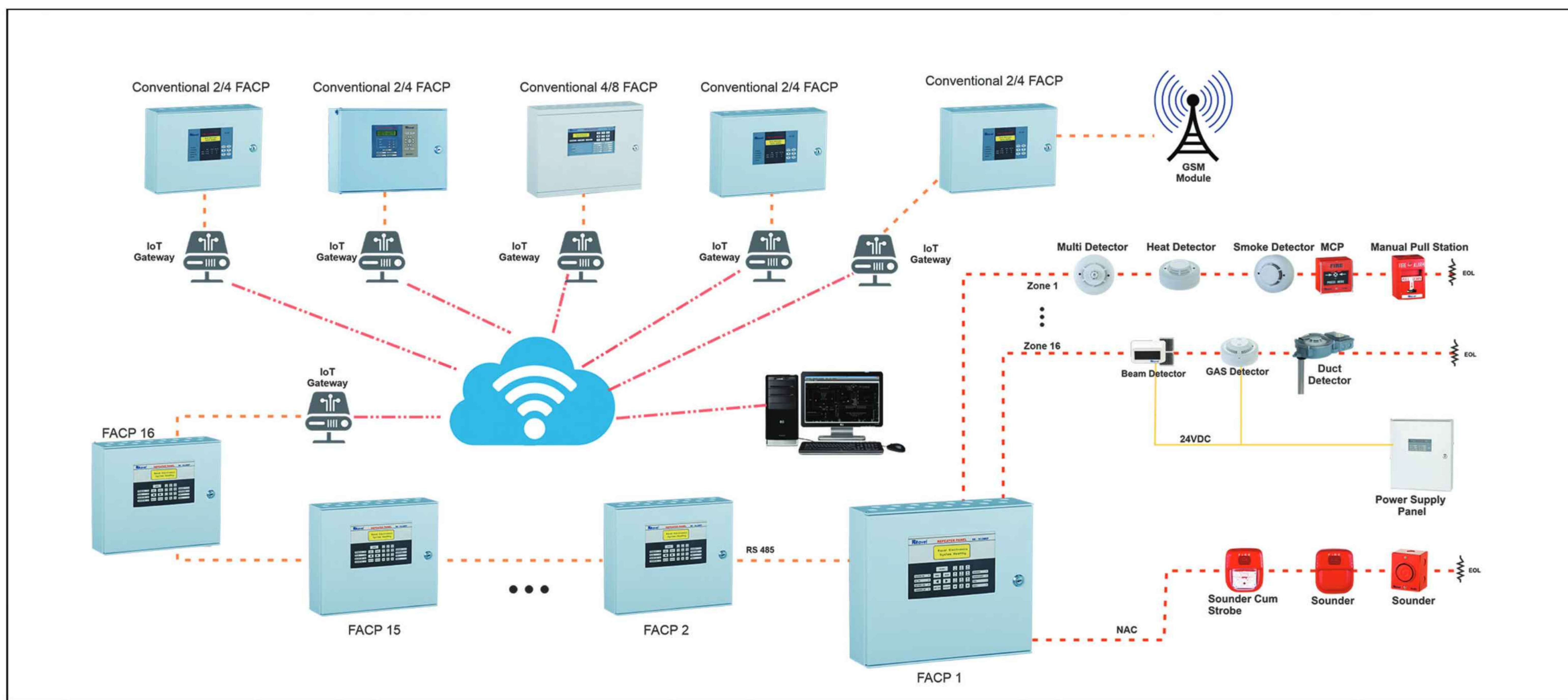
- Horn type speaker.
- 2.5W SW, 7.5W, 10W, 12.5W, 15W W
- 275-7000Hz frequency.
- ABS plastic.
- Wall/ceiling mountable.



ADDRESSABLE SYSTEM

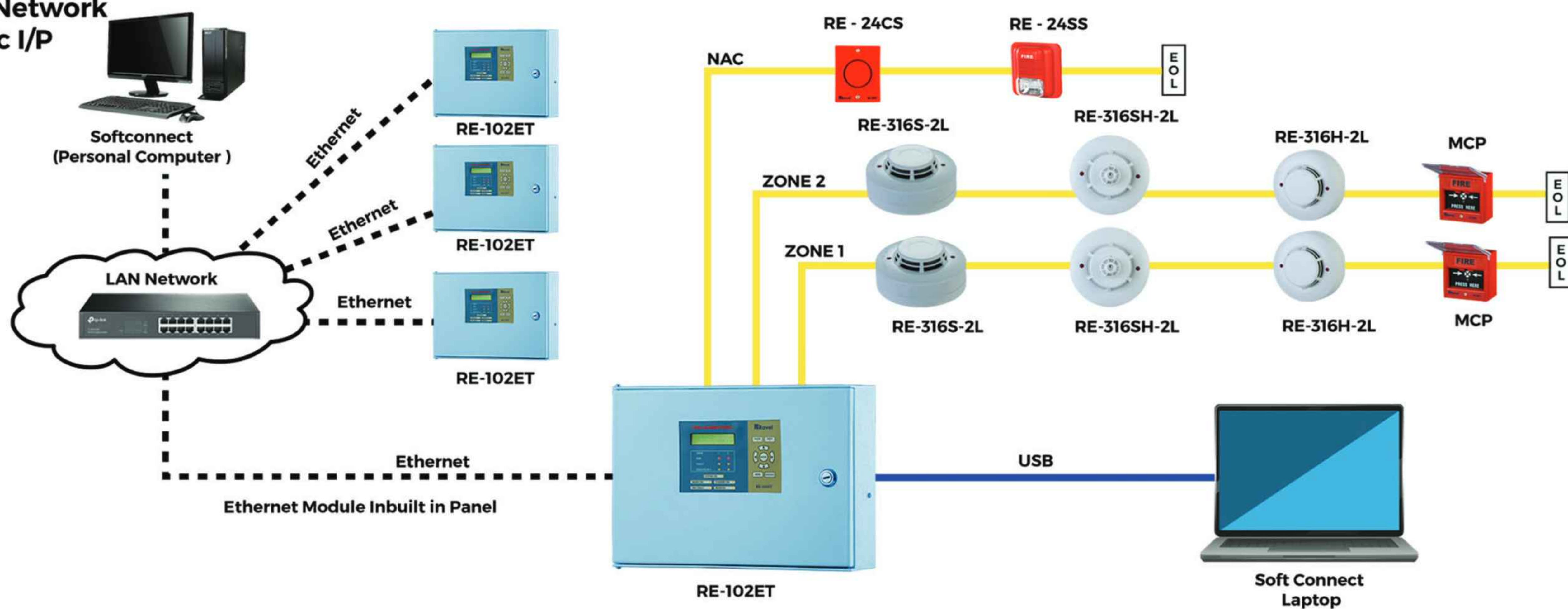


CONVENTIONAL SYSTEM




RE-102ET Schematic Diagram

Note : 1000 Panels Can Be Connected in Network With Static I/P



[illegible]

CERTIFICATE OF COMPLIANCE

This certificate of compliance validates the following			
TEST REPORT NUMBER - <i>Unnumbered</i> <i>Report ID for reference</i>	S15602-20150621	CERTIFICATE NUMBER	USLZ515518
DATE OF ISSUE	2015-06-21	DATE OF ISSUE	2017-06-02
DATE OF EXPIRY	Only these products bearing the UL Mark should be considered to be certified and covered under UL's Follow-Up Service	DATE OF EXPIRY	Only these products bearing the UL Mark should be considered to be Certified and covered under UL's Follow-Up Service
Manufacturer details			
[TO BE COMPLETED BY CLIENT]			
NAME OF FACTORY/ MANUFACTURER	MACUPRO INC.	NAME OF THE BRAND	Ravel
FACTORY ADDRESS / REGION (Country / State / City)	1204 W 5337 ST SIOUX FALLS SD 57105	MODEL / NO	RE-71635, RE-71650, RE-71635L
WEBSITE	www.macupro.com	LOGO ON THE PRODUCT	
TEL	1-877-347-7891	EMAIL	info@macupro.com



OUR PRIORITY

**CUSTOMER SATISFACTION THROUGH INNOVATIVE TECHNOLOGIES BY WAY OF
EXCEPTIONAL RELIABILITY AND SUSTAINABLE FIRE DETECTION SYSTEMS THAT
PROVIDES CONFIDENCE IN THE PROTECTION OF HUMAN LIVES AND ASSETS**

OUR PRESENCE AT

RAVEL AMERICAS INC
U.S.A 

RAVEL ELECTRONICS PVT LTD
INDIA 

RAVEL DMCC
DUBAI-UAE 

CHENNAI | MUMBAI | DELHI | BANGALORE

 sales@ravelfire.com

 +91 44 2496 3241/3251/1004

 www.ravelfire.com

GET IN TOUCH!

Scan to Know More About Us



150-A, Electronics Industrial Estate,
Perungudi, Chennai, Tamil Nadu 600096