

# AVANI – CMS

## CENTRALISED CONTROL & MONITORING SOFTWARE

### General

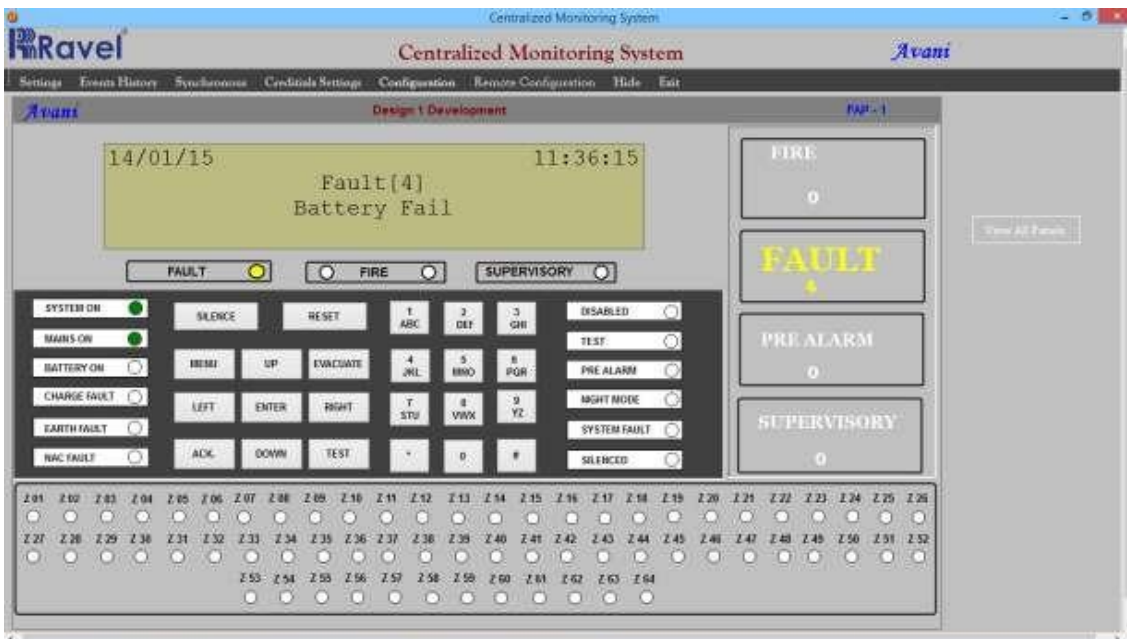
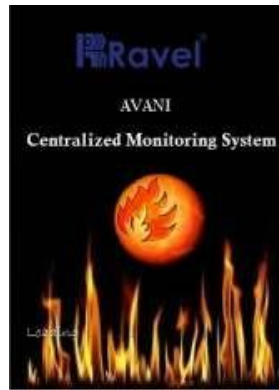
Centralized Control & Monitoring Software is a two level access controls for the security purpose (i.e. USER/ADMINISTRATOR). Event log list can be configured for panel /device wise with real time clock.visual & sound alerts for the Fire & fault conditions. Instant pop up's in case fire/fault status exists. Individual tones played for fault & fire indication. Device wise text to speech facility. Event based e-mail facility for the configured users.



### Features

- Two level of access controls for the security purpose (i.e. USER / ADMINISTRATOR).
- Status regarding the number of panels are shown on a single screen with location and Fire / Fault count.
- Event Log list can be configured for panel / device wise with real time clock.
- Visual & sound alerts for the Fire & fault conditions. Instant Pop Up's in case fire/fault status exists.
- Individual tones played for Fault & Fire indication.
- Device wise text to speech facility.
- Event based E-mail facility for the configured users.
- Loop with device wise voice alert for the Fire condition (USER DEFINED).
- The Panel Status or Remote notification shall be shown in the same way as the main panel front fascia for easy access to a panel.
- Acknowledge/Silence the sounders connected in panel through AVANI CMS.
- Reset the Panel through AVANI CMS.
- Communication can be done through ethernet / USB.
- The IP List is intended to view / edit the IP addresses of the configured panel.
- The events log can be exported/printed from the CMS software.
- Upto 64 panels can able to monitor & control with respect to licence.

# Screenshots



## PC Specification

<b>Recommended Operating Systems</b>	Windows 8.1 (with update 2919355) & above ('Home' package variants can be used if network connectivity is not required)
<b>Monitor</b>	Minimum 17" and support a screen resolution 1024 X 768
<b>Keyboard</b>	Required
<b>CD ROM Drive</b>	Required for software installation (Optional)
<b>Disk Space</b>	40Gb Hard Drive (Minimum Recommended)
<b>Backup Device</b>	Backup device recommended (e.g. CDR, USB, ZIP disk)
<b>USB Port</b>	USB Port for communications with Graphics Interface. (Additional serial ports may be necessary if connectivity to other services are required)
<b>Sound Card</b>	Windows compatible sound card & speakers / On-board sounder required for event notification
<b>Memory</b>	4 GB RAM (Minimum Recommended)
<b>LAN Connectivity</b>	Dedicated to Fire Alarm System.
<b>Processor</b>	Intel Pentium 4 Processor, 1.8 GHz or higher
<b>Options</b>	<ul style="list-style-type: none"> <li>Any resolution above 1024 X 768 can be supported however, Graphical bitmaps must be created in the appropriate format for the resolution selected.</li> <li>If monitors are to be used in Portrait manner a horizontal screen resolution of at least 950 pixels must be available.</li> </ul>
<b>Pointing Device</b>	Optical Mouse Required
<b>Graphics</b>	XGA Graphics Accelerator supporting a minimum 1024 X 768 resolution

## Compatible Devices

Model	Description
AVANI	Analogue Addressable Fire alarm Control Panel expandable upto 4 loop

## Ordering Information

Model	Description
Avani – CMS	Centralized Control & Monitoring Software

### India

RAVEL ELECTRONICS PVT LTD.,  
150A, Electronics Industrial Estate,  
Perungudi, Chennai – 96, India.  
E-mail: [sales@ravelfire.com](mailto:sales@ravelfire.com); Web: [www.ravelfire.com](http://www.ravelfire.com)

### UAE

RAVEL DMCC,  
Unit No: G30, DMCC Business Center,  
Level No 13, AG Tower, Dubai, UAE.  
E-mail: [sales@raveldmcc.com](mailto:sales@raveldmcc.com)

### USA

RAVEL AMERICAS INC.,  
2855 NW 112<sup>th</sup> Ave ST#2 Miami,  
Doral, Florida 33172, USA.  
E-mail: [sales.us@ravelfire.com](mailto:sales.us@ravelfire.com)