

SOFT CONNECT

RE-900 Series Support Software



Product Overview:

Soft connect is used to monitor the status of RE-900 series panels connected in a network. It can report the fire location and act as early warning for occupants. The software also provides an extensive support for the user to monitor the RE-900 Series Panel with remote notification capability.

FEATURES:

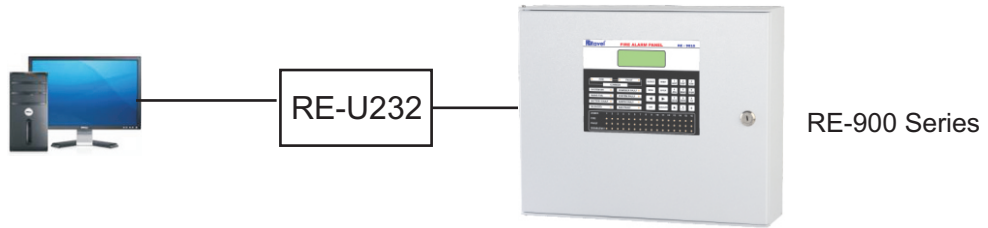
- GUI based user friendly software
- Fire/Fault Identified with location name.
- Zone wise location programming
- Zone wise Isolation Facility
- Events Storage and Printing facilities
- Monitoring Fire Alarm Control Panel
- Visual & sound alerts for Zone wise Fire & fault.
- Instant Pop Up's for any Fire or Fault exits.
- Zone wise voice alert for the Fire condition (USER DEFINED).
- Acknowledge the panel NAC's from PC itself based on model.
- Reset the Panel from PC itself based on model
- All the Fire/ Fault events are saved in the event log list with the date, time and event description.
- The Application PC can be used for other purposes as well apart from monitoring the fire panels in the network.
- Two user modes available for security purpose (i.e. USER /ADMINISTRATOR).

System Requirements:

- OS:- Windows XP, Windows 7, Windows 8.
- Multimedia output is necessary for Voice Annunciation

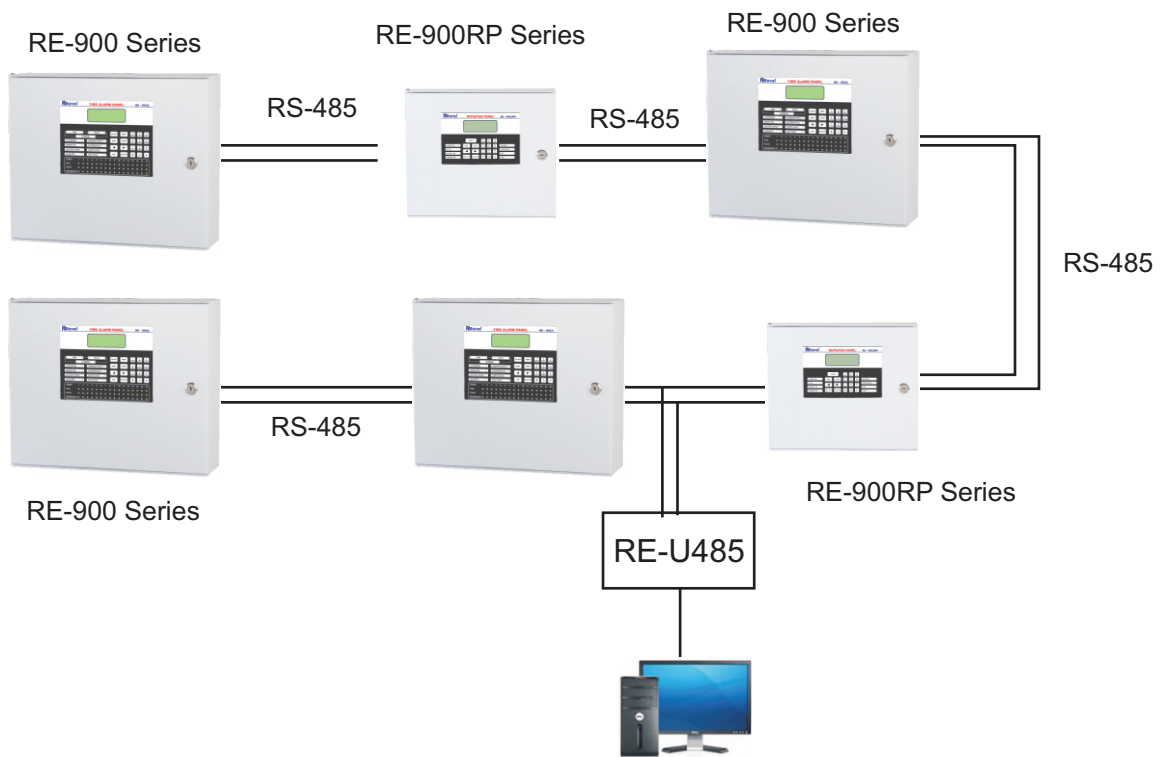
Topology Diagram

1) RE-U232



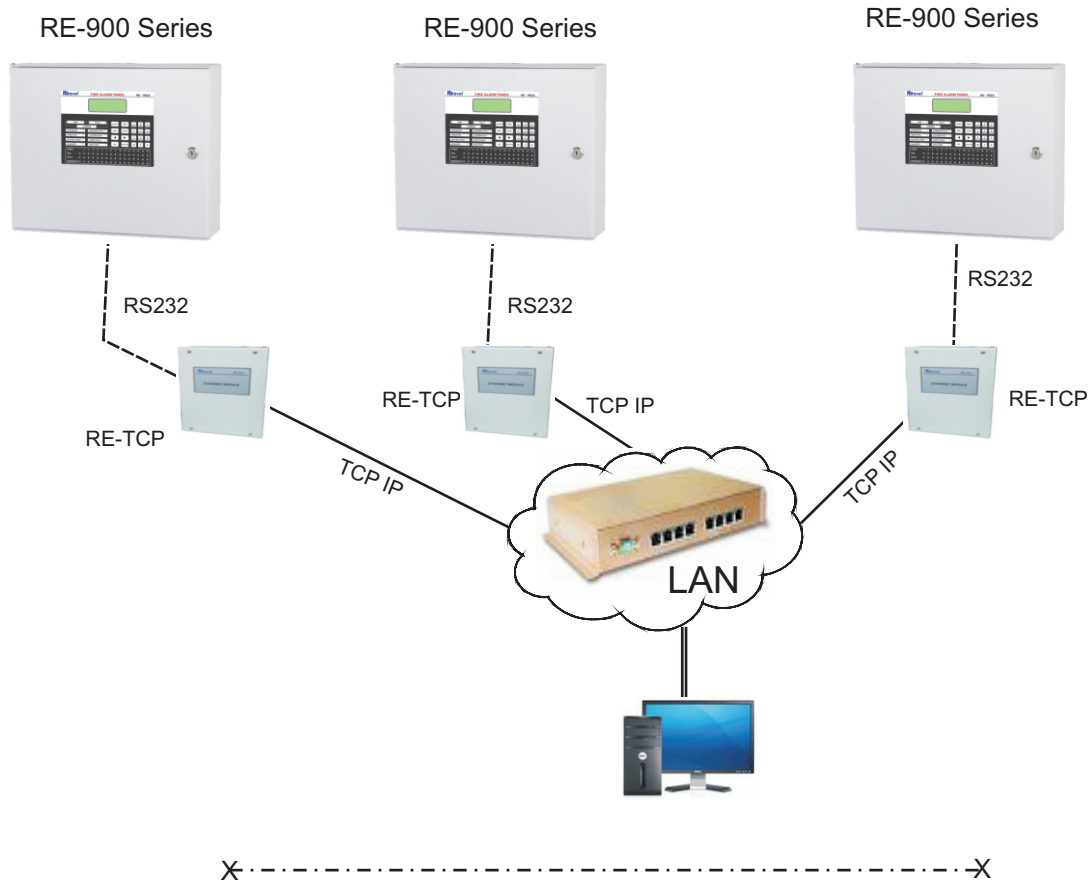
X-----X

2) RE-U485



X-----X

3) RE-TCP



Compatible Devices:

| MODEL | DESCRIPTION |
|-----------------|------------------------------|
| RE-900 Series | Fire Alarm Control Panel |
| RE-900RP Series | Fire Alarm Repeater Panel |
| RE-U232 | USB to RS-232 Converter |
| RE-U485 | USB to RS-485 Converter |
| RE-TCP | Conventional Ethernet Module |

Ordering Information:

| MODEL | DESCRIPTION |
|-----------------|---|
| Soft connect-1 | Soft connect for RE-900 Series (one to one i.e PC to Panel) |
| Soft connect-16 | Soft connect for RE-900 Series (16 Panels in a network) |
| Soft connect-32 | Soft connect for RE-900 Series (32 Panels in a network) |

India:

RAVEL ELECTRONICS PVT LTD.,

(An ISO 9001 Company)

150A, Electronics Industrial Estate, Perungudi, Chennai - 96 .India.

E-Mail: marketing@ravelfire.com; Web : www.ravelfire.com

United Kingdom:

RAVEL ELECTRONICS LTD.,

Unit 11, Chancel Industrial Estate, Newhall street,
Willenhall WV13 1NX, West Midlands, United Kingdom.

E-mail: info@ravelfire.co.uk; Web: www.ravelfire.co.uk